

# IDEAs in Action 1

## DEFINE SCALE UP ELEMENTS USED BY THE 3 PRESENTING SITES

### What should we start doing?



Panels and IDEAs In Action  
June 23rd 2022

### What is not working?



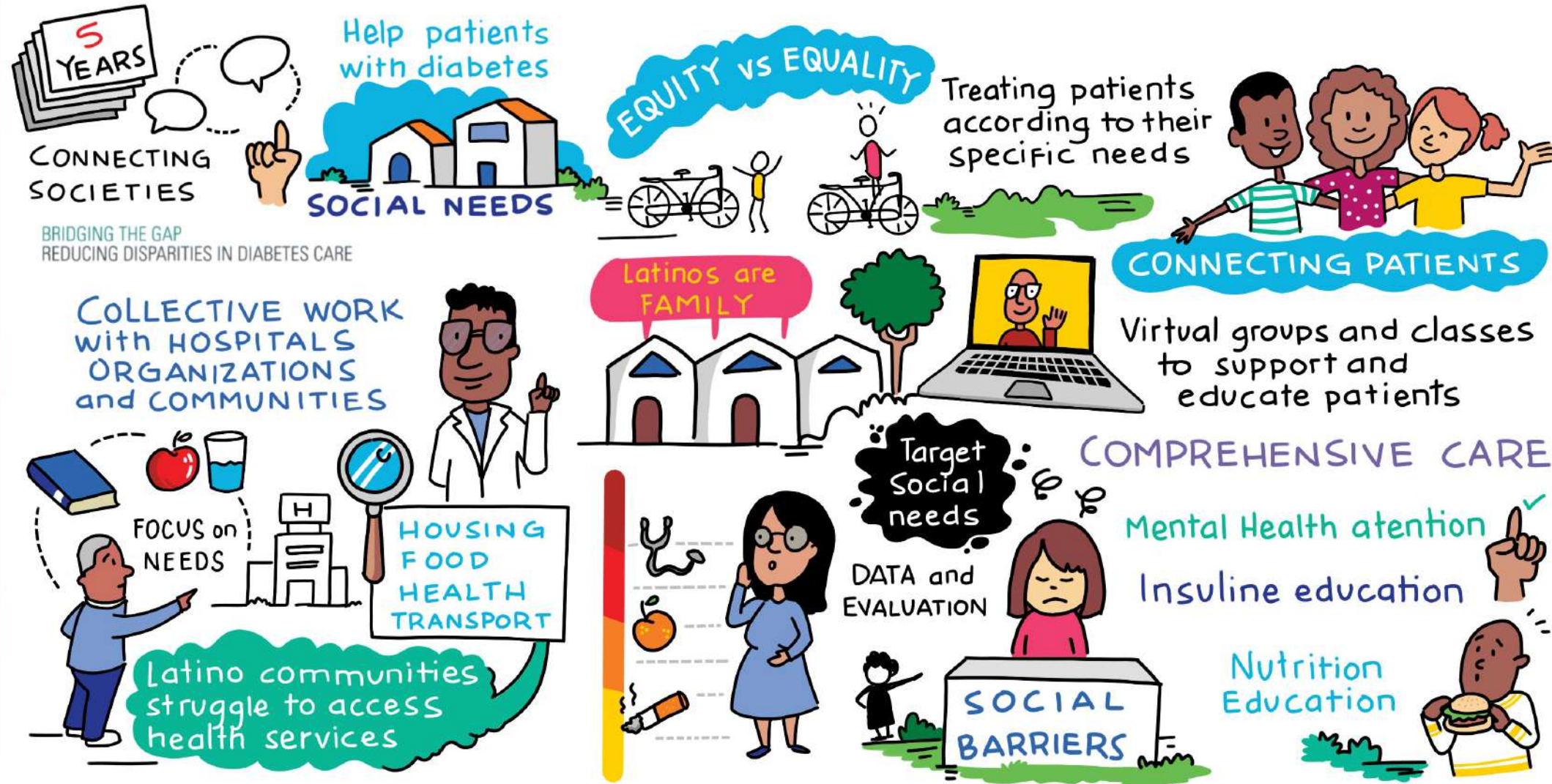
### What are we doing right, and can continue doing?





# PANEL 1

## CARE TRANSFORMATION ACROSS 3 BTG GRANTEES SERVING THE LATINO COMMUNITY



Funded By  
**MERCK**  
FOUNDATION

BRIDGING THE GAP  
REDUCING DISPARITIES IN DIABETES CARE

Led By  
**THE UNIVERSITY OF CHICAGO**



**LA CLÍNICA  
DEL PUEBLO**

**Panels and IDEAs In Action**

June 23rd 2022



# IDEAs in Action 2

BRINGING SUSTAINABILITY TO WASHINGTON DC AND PRINCE GEORGE'S COUNTY

## What should we start doing?



PROMOTE  
CORPORATION  
PHILANTHROPY

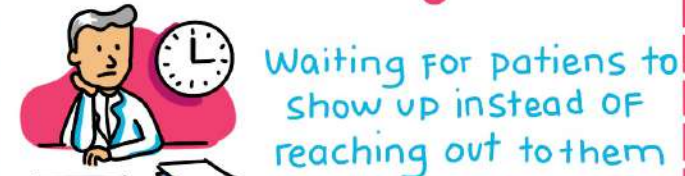


Change the Financing MODEL



Panels and IDEAs In Action  
June 23rd 2022

## What is not working?



EQUITY  
- on -  
INVESTMENT

## What are we doing right, and can continue doing?



- Address Social Needs -



LA CLÍNICA  
DEL PUEBLO



## PANEL 2

### DESCRIBING SUSTAINABILITY SCENARIOS FOR DIABETES CARE



Panels and IDEAs In Action

June 23rd 2022



LA CLÍNICA  
DEL PUEBLO



# IDEAs in Action 3

## STRATEGIC PARTNERSHIPS AND PARTNERSHIP EVALUATION

### What should we start doing?



HOUSING TRANSPORT EDUCATION



CLINIC  
CAPACITY



Participation of Communities  
in Research and Partnerships



Make sure patients  
are able to come back  
when we refer them

WHAT CAN WE DO TOGETHER?



Evaluation

Funding and Partnerships  
must build Future Programs



Data must include **STORIES**

Panels and IDEAs In Action

June 23rd 2022

### What is not working?



Sharing data  
is Key to great  
PARTNERSHIP

**Improve Transitions**



'What is the  
cost of these  
partnerships?'

Partnerships that promote

**COLLABORATION**

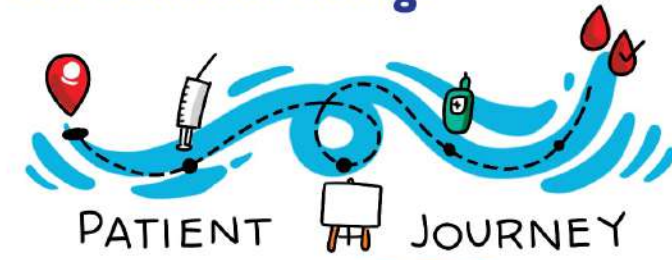
-in stead of-

**COMPETITION**



"We need more investment in  
COALITIONS and ADVOCACY"

### What are we doing right, and can continue doing?



PATIENT JOURNEY

**CBPR**

APPROACH TO MAP  
COMMUNITY NEEDS

Make Partnerships **STRONGER**  
for the future



Capacity Building for  
all stakeholders  
**ADVOCACY**

Resources  
for **LEGAL  
SERVICES**



Know your  
**HEALTH  
RIGHTS!**

**SHARING INFORMATION**



**LA CLÍNICA  
DEL PUEBLO**



# PANEL 3

## INTERSECTORAL ACTION AND THE IMPACT OF ACADEMIC-COMMUNITY STRATEGIC PARTNERS



Panels and IDEAs In Action  
June 23rd 2022